

ឯកសារគម្រោង



THE UMALAS  
SIGNATURE

The first high-tech  
apartment complex

 Canggu, Bali



Premium class  
**apartment complex**  
for living and investing in a privileged  
Canggu District locations







All the necessary infrastructure for life, work and entertainment inside the complex



Panoramic view of the ocean and volcanoes from the apartments



Maximum amenities for permanent and short-term accommodation



Modern design, high-quality finishes, furniture and accessories.



Smart technologies for real estate management



မြန်မာ့ပတ်ဝန်းကျင်



THE UMALAS  
SIGNATURE



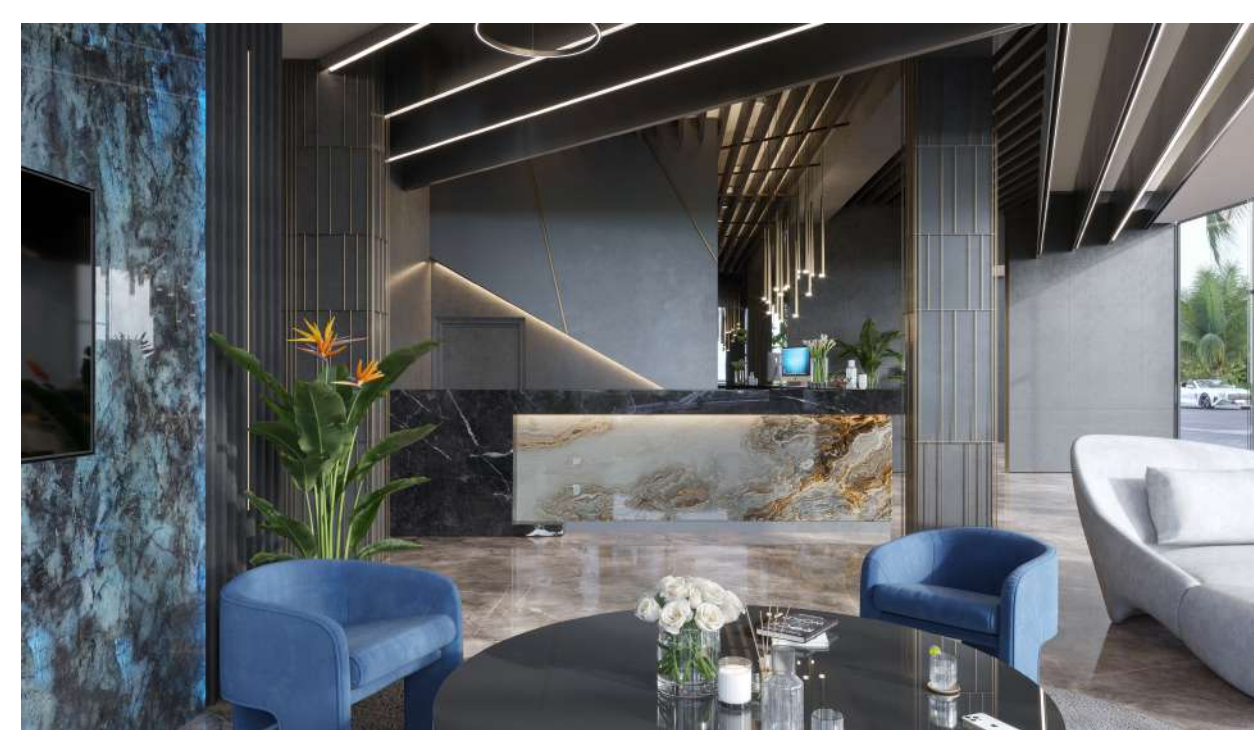


# COMPLEX INFRASTRUCTURE

**DESIGNED SPECIFICALLY FOR COMFORTABLE PERMANENT  
RESIDENCE AND FULL RELAXATION.**

Umalas Signature is designed so that guests and residents can fully enjoy their holidays and all the amenities without having to leave the complex.







မြန်မာ့အလင်း



THE UMALAS  
SIGNATURE

Everything you  
**DREAMED OF**  
IMAGINING REAL ESTATE FOR LIVING  
AND INVESTMENT









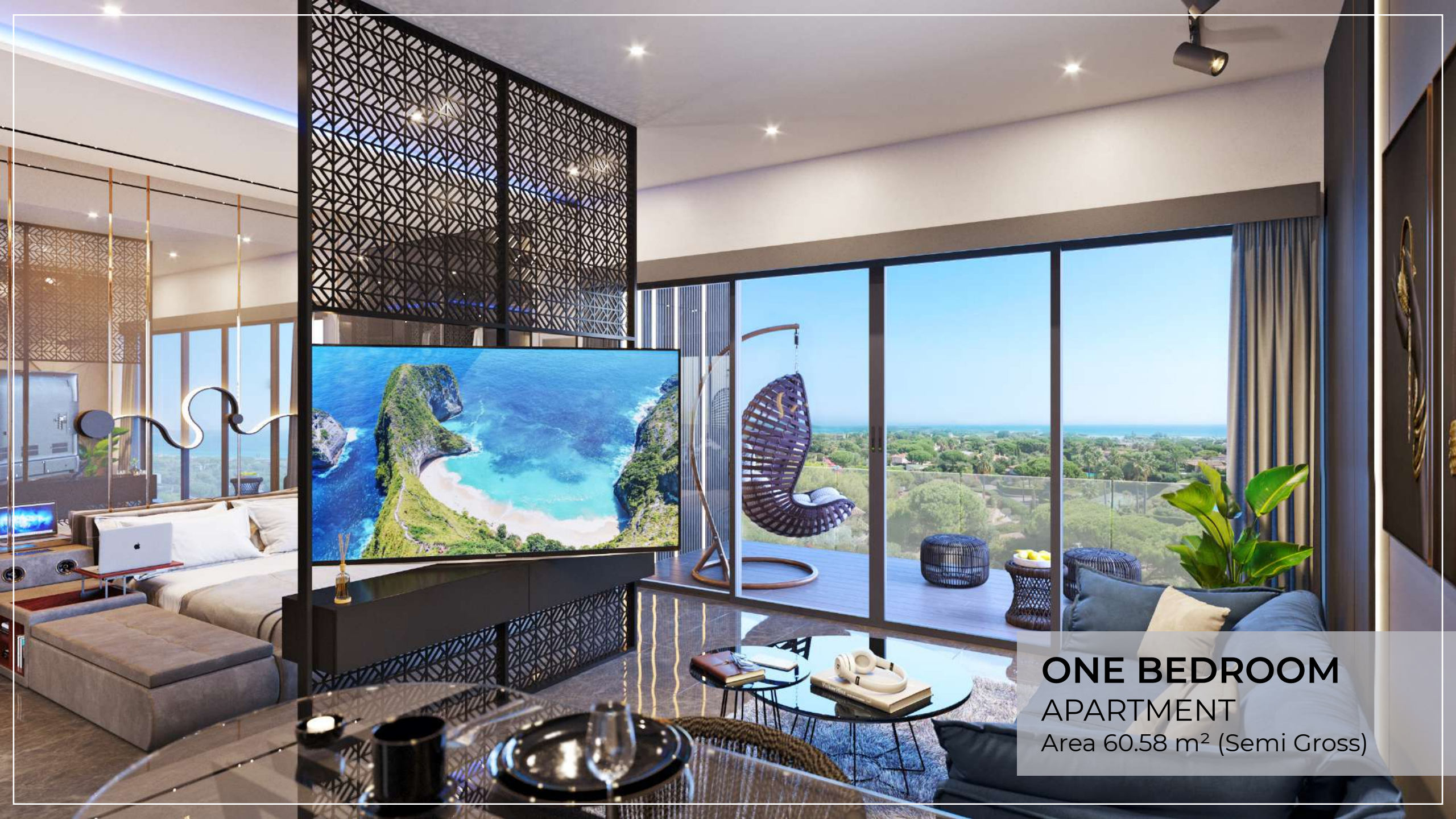
*Signature*



THE UMALAS  
SIGNATURE







**ONE BEDROOM**  
**APARTMENT**  
Area 60.58 m<sup>2</sup> (Semi Gross)























# APARTMENT EQUIPMENT

 CAPACITY  
**4 PEOPLE**

- Bed 180x200 cm
- Sofa bed
- Table near the sofa
- Clothes closet
- Extra space for things beside the bed
- Fully equipped kitchen for full cooking, with utensils
- Refrigerator
- Sound system in the bedroom and bathroom
- 58 inch television that swivels 180
- Bar counter with two chairs
- Shower stall with functional blackout Smart Glass
- Additional storage room
- Balcony with panoramic views
- Hanging Chair on Balcony





# ONE BEDROOM APARTMENT

Area 60.58 m<sup>2</sup> (Semi Gross)



## USED MATERIALS

### Foundation

Bored piles

### Structure

Reinforced Concrete Structural Elements

### Walls

Celcon Block (Interior)

Celcon Block with plaster and paint (Exterior)

### Ceiling

Painted Drywall

### Wall Finish

Paint for walls and wallpaper

### Floor Finishing

Uniform tiles

### Doors

Painted wood for the main entrance

And Smart glass door for the bathroom

### Windows

Black aluminum YKK

### Balconies

Black Painted Steel Railings With wooden handles

### Bathroom

Toto cabinets, hot and cold shower,  
Dressing table and washbasin from IKEA

### Electric and mechanical installation

Smart System





**TWO BEDROOM**  
**APARTMENT**  
Area 121.16 m<sup>2</sup> (Semi Gross)



























# APARTMENT EQUIPMENT

 CAPACITY  
**4 PEOPLE**

- 2 bedrooms with private bathrooms
- 2 beds 180x200 cm
- Shower cubicle with functional blackout Smart Glass
- Clothes closet in each bedroom
- Extra storage space next to each bed
- Table and Chair in one bedroom
- Full living room
- Sofa bed
- Dining area with dining table for 4
- Fully equipped kitchen for full cooking, with utensils
- Refrigerator
- Sound system in each bathroom
- 58 inch television with cabinet
- Extra storage room
- Balcony with panoramic views
- 2 hanging chairs on the balcony





# TWO BEDROOM APARTMENT

Area 121.16 m<sup>2</sup> (Semi Gross)



## USED MATERIALS

### Foundation

Bored piles

### Structure

Reinforced Concrete Structural Elements

### Walls

Celcon Block (Interior)

Celcon Block with plaster and paint (Exterior)

### Ceiling

Painted Drywall

### Wall Finish

Paint for walls and wallpaper

### Floor Finishing

Uniform tiles

### Doors

Painted wood for the main entrance

And Smart glass door for the bathroom

### Windows

Black aluminum YKK

### Balconies

Black Painted Steel Railings With wooden handles

### Bathroom

Toto cabinets, hot and cold shower,

Dressing table and washbasin from IKEA

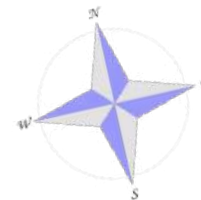
### Electric and mechanical installation

Smart System

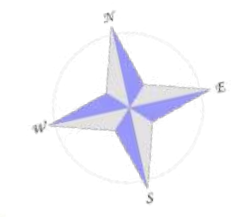


# BASEMENT FLOOR

សម្រាប់







# Apartment Location

## 1 - 4 floor



- Two bedroom apartment 121.16m<sup>2</sup>
- One Bedroom Apartment 60.58m<sup>2</sup>

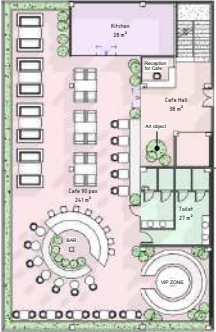
- ① Lobby
- ② Elevator



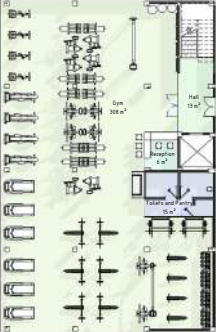
# Infrastructure area on the rooftop

With an area of more than 4,000 m<sup>2</sup>

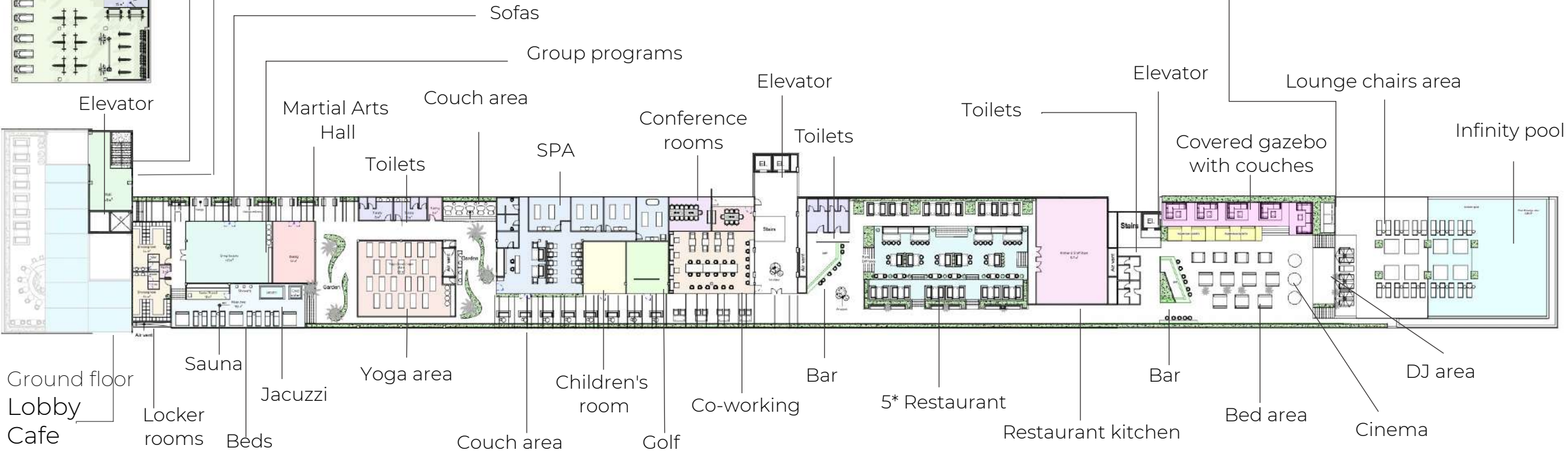
សម្រាប់ប្រជាជន



3rd floor  
Lounge Cafe  
with a panoramic view of the ocean



2nd floor  
Gym





សិរីហ្វមលាស



THE UMALAS  
SIGNATURE

+62 81 558 66 8888 WHATSAPP

WEBSITE: [THEUMALAS.COM/](http://THEUMALAS.COM/)

[SALES@THEUMALAS.COM](mailto:SALES@THEUMALAS.COM)